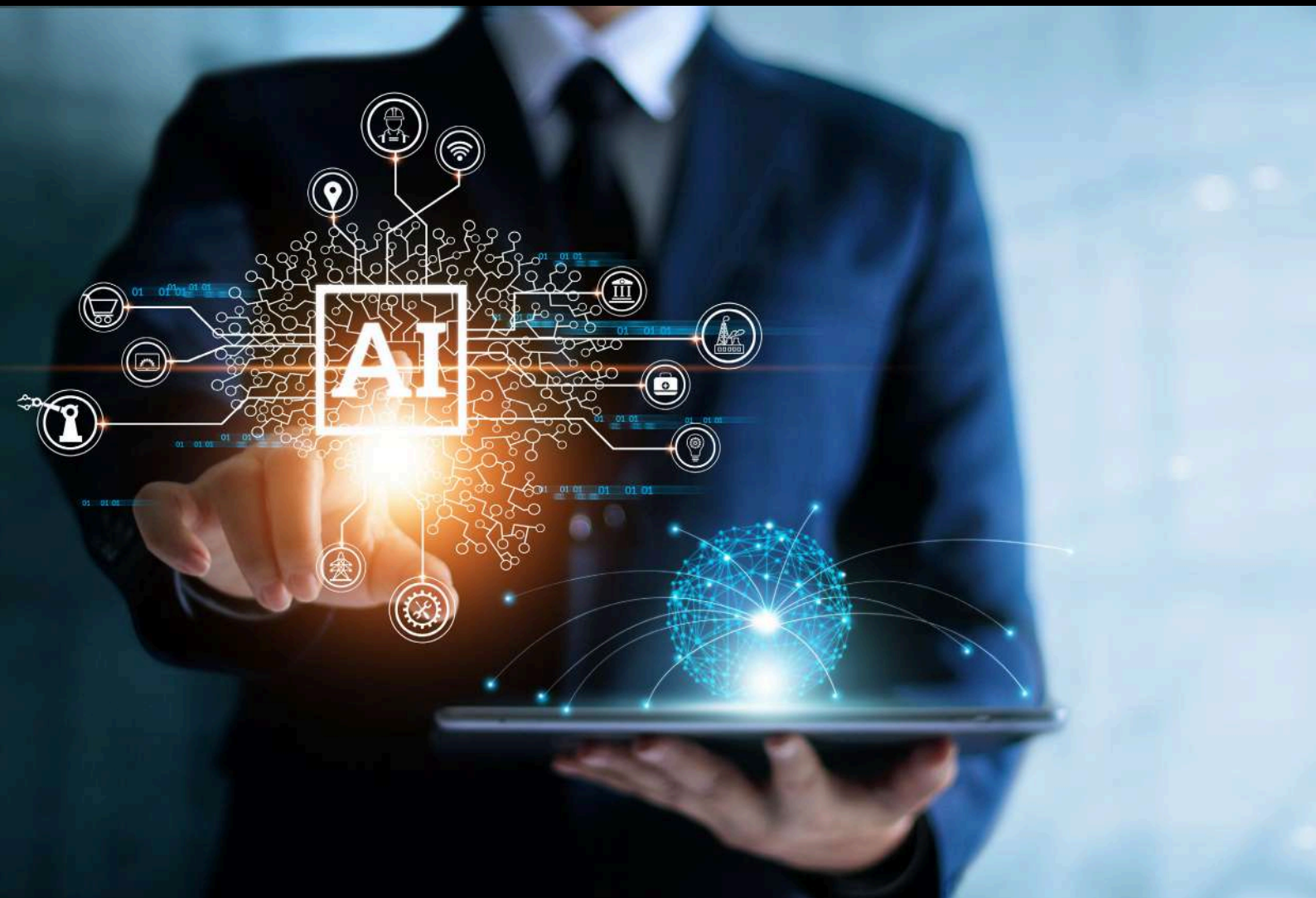


# Intelligent **NR**

DEEP LEARNING



Canon's new AI image processing option uses an algorithm based on deep-learning to read and eliminate noise on clinical images.

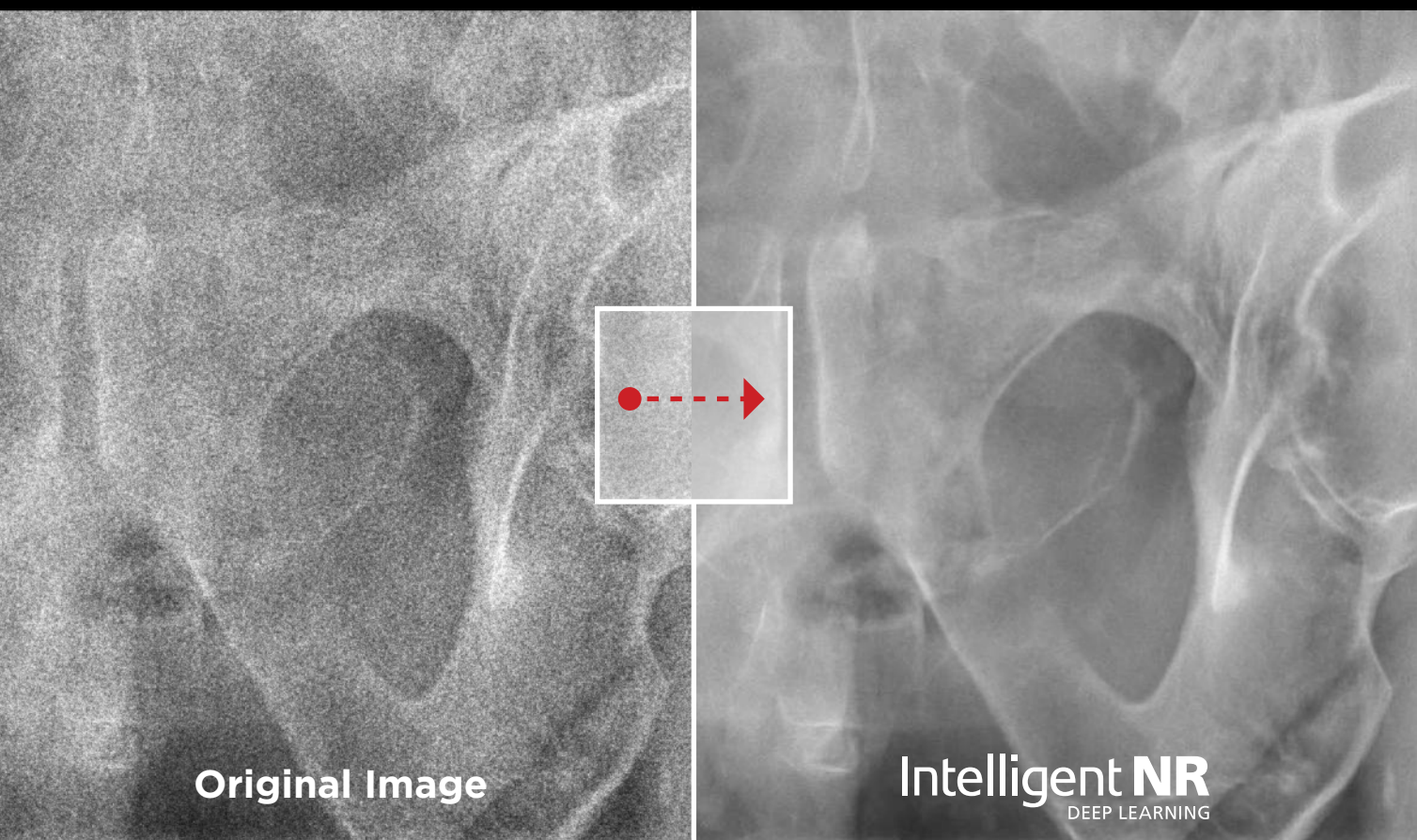
**Canon**

CANON MEDICAL COMPONENTS EUROPE B.V.



# Intelligent Noise Reduction (Intelligent NR)

Intelligent NR delivers high quality diagnostic images by reducing noise with no noticeable loss of anatomical detail. This provides the potential for significant dose reduction, while maintaining superior image quality.



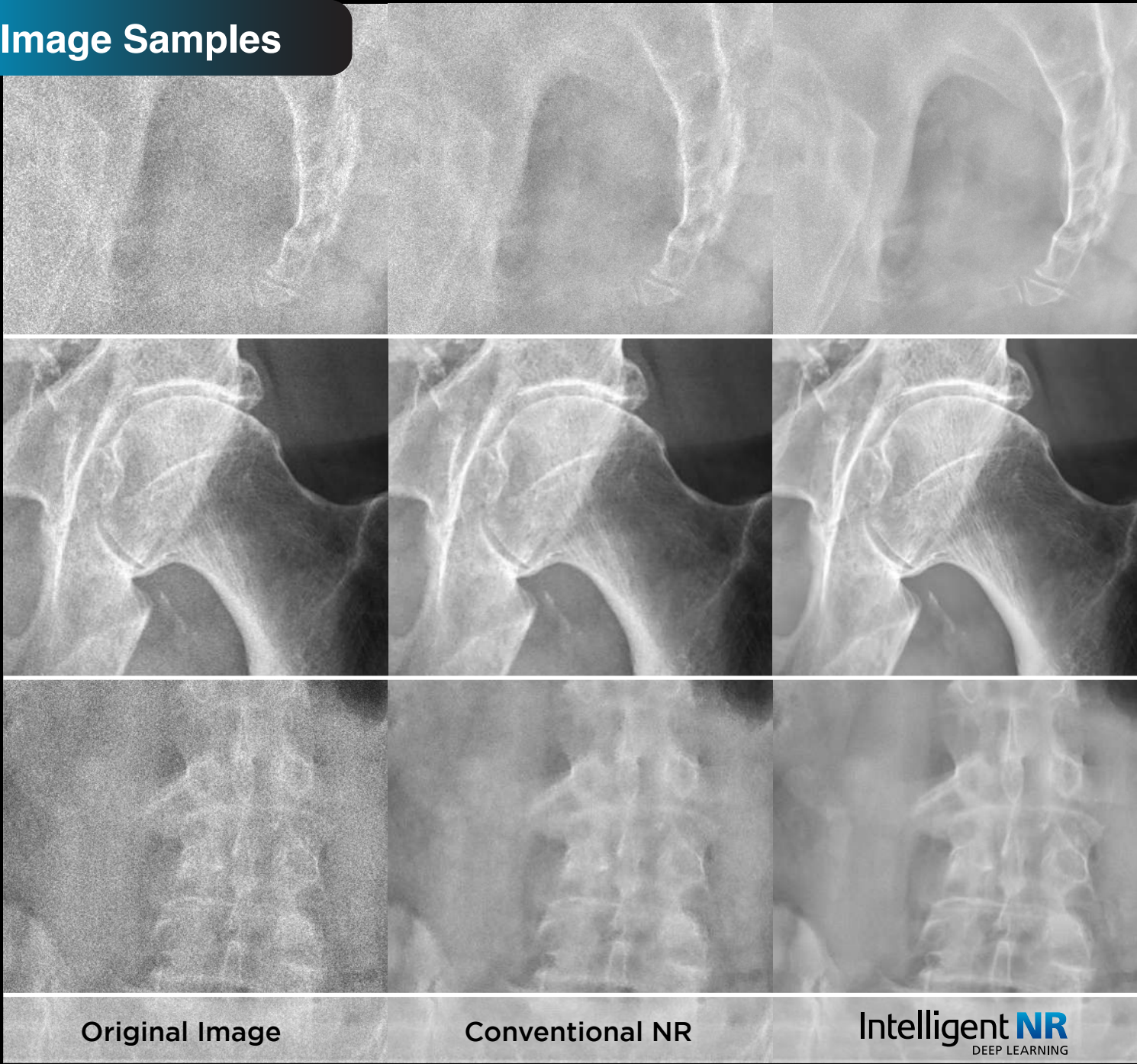
## Efficacy

Intelligent NR was developed using machine learning and an existing clinical image database to create a neural network for deep-learning. By identifying the characteristics of noise and applying the pre-learned neural network, a noise-reduced image is created.

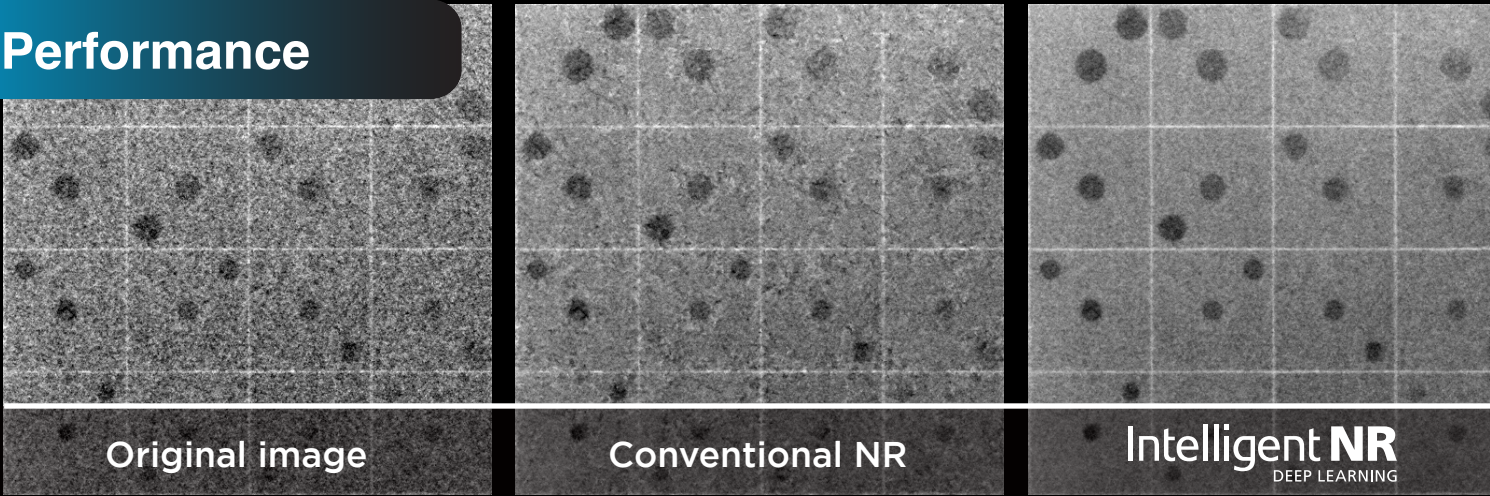
The software decreases the graininess of DR images by increasing the signal to noise ratio without loss of anatomical data, therefore, improving diagnostic value.

It complies with the ALARA principle by allowing for a possible reduction in radiation dose and improvement of diagnostic image quality.

## Image Samples

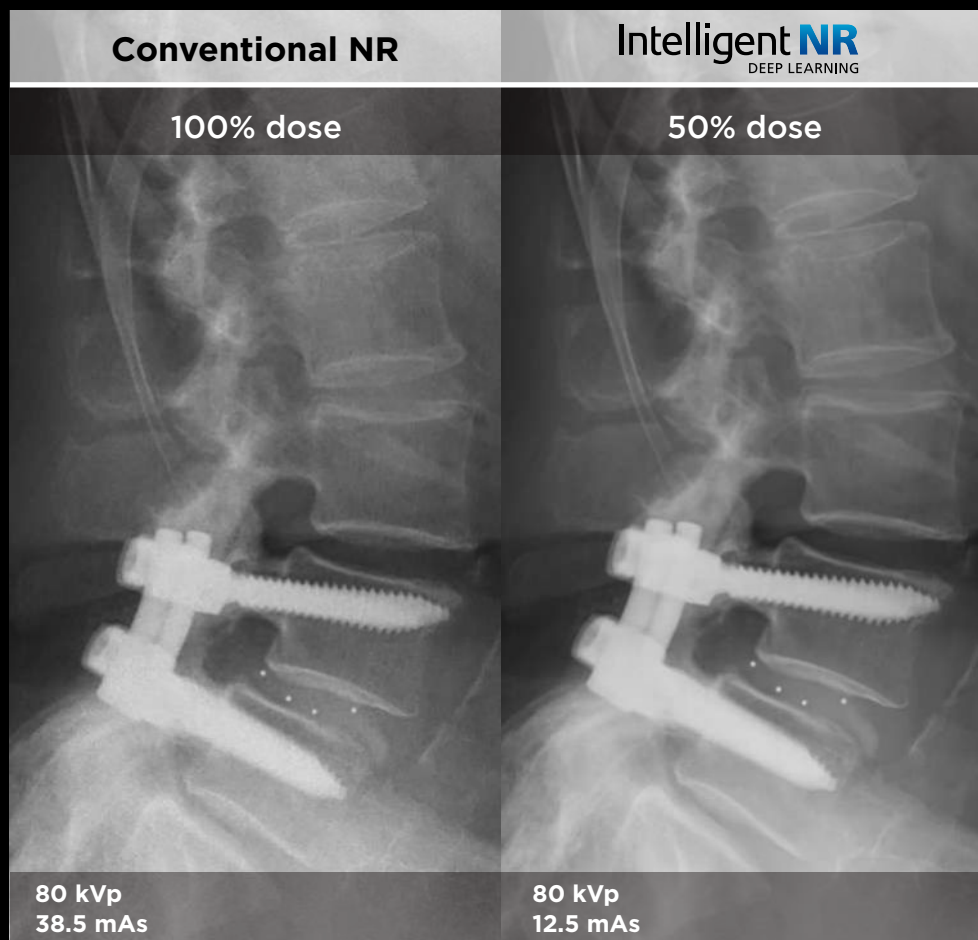


## Performance





## Visible Results



Improved image quality at lower (half) dose with Intelligent NR when compared to conventional NR at 100% dose.

## Key Features



Possible dose reduction.



Complies with ALARA principle when improving image quality.



Increased image quality and fewer repeats- patients spend less time in x-ray department



Only available on x10 and Elite series. Available on NE 3.10 or higher. (Minimal PC specifications apply)

**Canon**

CANON MEDICAL COMPONENTS EUROPE B.V.

Bovenkerkerweg 59, 1185 XB, Amstelveen, Netherlands

© 2023 CANON MEDICAL COMPONENTS EUROPE B.V.

All rights reserved. All products and names mentioned are the property of their respective owners. While Canon has made every effort at the time of publication to ensure the accuracy of the information provided herein, product specifications, configurations, prices, system/component/options availability are all subject to change without notice. When used for medical imaging applications, the customer assumes full responsibility and liability to determine suitability for use as well as responsibility for documentation and testing to comply with relevant medical device standards. Canon assumes no liability for such applications.

INR 052023 V1